

# TU/e MiKTeX Installation Instructions

Marko Boon

## Abstract

This document contains MiKTeX installation instructions. Please note that these instructions only apply to the TU/e (Technische Universiteit Eindhoven) version of MiKTeX. You should have a TU/e MiKTeX CD-ROM, at least version 2.1 October 2001. If you have followed these installation instructions, and still have troubles installing MiKTeX, send an e-mail to Marko Boon (marko@win.tue.nl) or Wil Kortsmit (rcwil@win.tue.nl).

TU/e  $\TeX$  homepage: <http://www.win.tue.nl/latex>

<b>1</b>	<b>Uninstall previous MiKTeX versions</b>	<b>2</b>
<b>2</b>	<b>Upgrading MiKTeX from a previous installation</b>	<b>2</b>
<b>3</b>	<b>The main MiKTeX installation</b>	<b>3</b>
<b>4</b>	<b>Customizing MiKTeX after the installation</b>	<b>3</b>
4.1	Wrapping . . . . .	4
4.2	Filetype associations . . . . .	4
4.3	Key mappings . . . . .	5
4.4	WinEdt and GSView registration . . . . .	6
<b>5</b>	<b>Java-Mode for WinEdt installation</b>	<b>7</b>

# MiKTeX installation instructions

---

## 1 Uninstall previous MiKTeX versions

If you ever had MiKTeX installed on your computer it is recommended to uninstall this. However, if you want to upgrade only a certain part of the complete MiKTeX distribution, you should read the section on upgrading MiKTeX below. To uninstall MiKTeX you can use the uninstall program on this CD-ROM. This program performs the following operations:

1. it checks for previous versions of GhostScript, GhostView, WinEdt and PrintFile. It runs the corresponding uninstall programs,
2. if any of the above programs still have registry entries or files on the local harddrive, these will be removed,
3. it removes the complete MiKTeX installation from harddisk and registry.

To run the uninstall program, follow these steps:

1. as you have read in step three above, the complete MiKTeX tree will be removed from your computer. This means that you have to backup all files that you might have added to your MiKTeX (especially the localtexmf) tree.
2. insert the TU/e MiKTeX 2.1 CD-ROM. If the setup program starts automatically, please abort the installation.
3. click on Start, then on Run... Open the file  
`d:\localtexmf\utils\uninstallmiktex.exe`  
where d: should be replaced by the letter assigned to your CD-ROM drive.
4. follow the installation instructions

Check if the directory MiKTeX has been removed from your harddisk. Otherwise you should do so manually.

## 2 Upgrading MiKTeX from a previous installation

It is always recommended to uninstall MiKTeX before starting a new installation. However, if you are only interested in upgrading or reinstalling a certain part of the MiKTeX distribution, you can choose to perform an upgrade. Parts that can be upgraded are:



- the core MiKTeX installation. This is the texmf tree,
- the localtexmf tree, which contains TU/e additions to the base MiKTeX installation. In the localtexmf tree you will find popular style files, fonts and changed settings (like Dutch abbreviation rules).
- WinEdt, extra plug-ins and macros for WinEdt
- GhostScript and GhostView
- Micrografx Designer

To perform an upgrade, just insert the CD-ROM. The setup program will ask for each part if you want to reinstall it. You can no longer choose the location of the miktex tree. If you want to install MiKTeX on a different drive, you have to uninstall it completely.

### 3 The main MiKTeX installation

After you uninstalled the previous MiKTeX version, or if you decide to upgrade (parts of) the MiKTeX installation, you can start the main installation program. Just insert the CD-ROM in your computer. Usually the setup program starts by itself. If it does not start by itself, Click on Start, then on Run... and open the location

```
d:\miktex21tue.exe
```

where d: should be replaced by the letter assigned to your CD-ROM drive. If you completely removed MiKTeX from your system (or if you never had it at all) you only have to choose a drive letter. The rest of the installation will be executed automatically. The only option you can choose, is whether you want to install Micrografx Designer or not.

### 4 Customizing MiKTeX after the installation

In this section we describe some adjustments that you might want to make to customize WinEdt. MiKTeX versions later than April 2002 make these adjustments automatically during the installation process. You only need to make these adjustments if you have an older installation of MiKTeX.

# MiKTeX installation instructions

## 4.1 Wrapping

By default, WinEdt uses paragraph wrapping. Since most users are not used to this kind of wrapping, you might want to disable paragraph wrapping and enable normal line wrapping.

- Click on **Options** → **Settings**,
- select the **Wrapping** tag,
- clear the 'Soft wrapping for modes:' textfield,
- uncheck the 'Show hard returns' checkbox

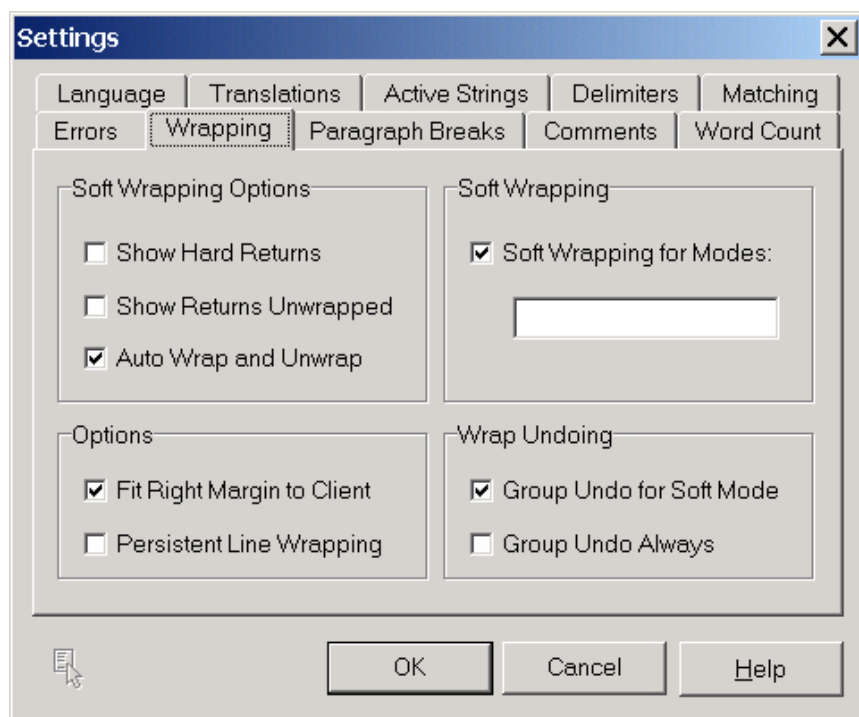


Figure 1: WinEdt wrapping settings

If the dialog looks like the dialog above, click OK and restart WinEdt.

## 4.2 Filetype associations

WinEdt offers the possibility to associate all  $\text{\LaTeX}$  related files with WinEdt. To do this, you should follow these steps:



- go to **Options** → **Configuration Wizard**,
- in the section **Additional Wizards** click on the button **Shell Configuration Wizard**,
- click on tab **Filetype Associations**

You should see a dialog as in the image below. Maximize this dialog. You should see three buttons labelled **Modify filetype associations**. Click on each of them, and click on the OK button in each dialog that appears.

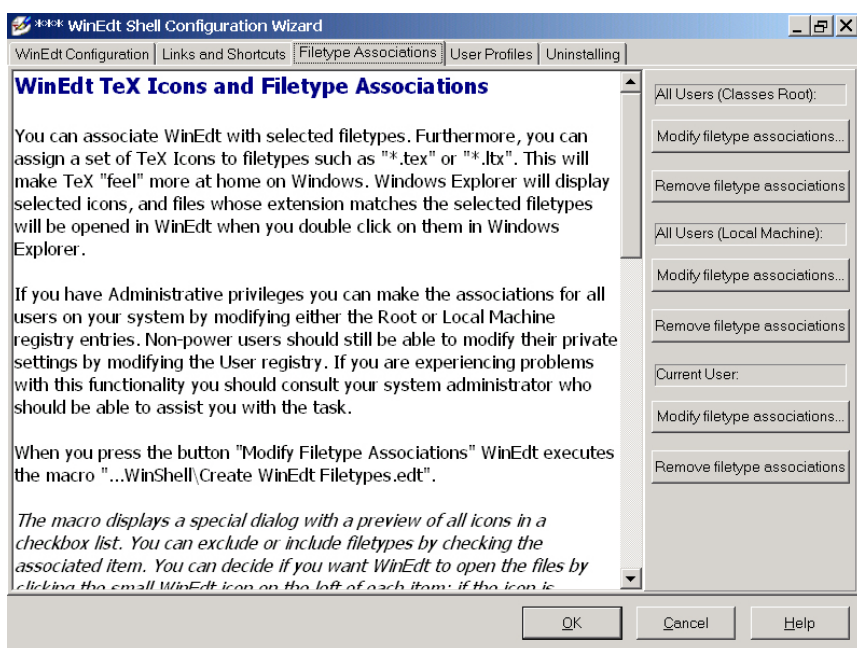


Figure 2: WinEdt file type associations

### 4.3 Key mappings

If you are fond of using keyboard shortcuts instead of the mouse, you might have noticed that there is no keyboard shortcut assigned to PDF&L<sub>A</sub>T<sub>E</sub>X. If you would like to assign CTRL+SHIFT+P to PDF&L<sub>A</sub>T<sub>E</sub>X, which would be logical, follow these steps:

- Click on **Options** → **Menu setup**,
- in the list of menu items, scroll to and double click on Accessories
- in the new list of menu items, scroll to and click (once) on PDF&LaTeX

# MiKTeX installation instructions

- click in the shortcut text field
- press the buttons CTRL, SHIFT and P simultaneously

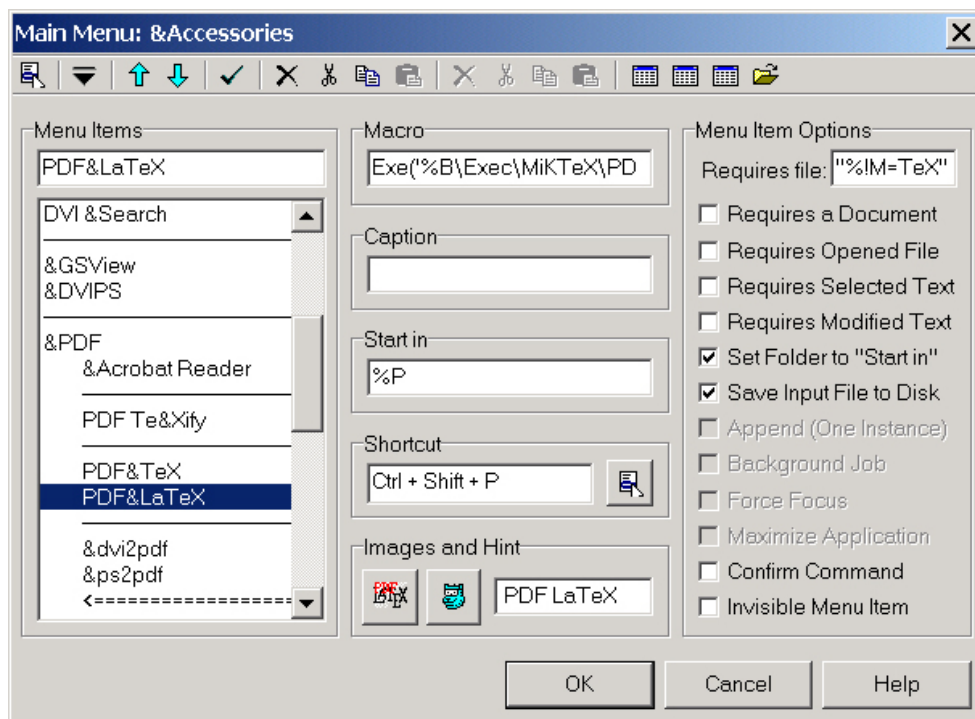


Figure 3: WinEdt keyboard shortcut for PDF $\LaTeX$

Verify that the dialog looks like the dialog above, and click OK.

## 4.4 WinEdt and GSView registration

At Technische Universiteit Eindhoven we have a campus wide license for both WinEdt and GSView. Registering these program will help you to get rid of annoying dialogs asking you to register the product. If you are an employee or student of TU/e and you want to register WinEdt or GSView, please send an e-mail to Marko Boon (marko@win.tue.nl) or Wil Kortsmits (rcwil@win.tue.nl).



## 5 Java-Mode for WinEdt installation

On the MiKTeX CD-ROM a Java-Mode for WinEdt is included. This macro enables Java syntax highlighting and adds a menu that enables the user to compile and run a Java program from WinEdt. Installation instructions:

1. insert the MiKTeX CD-ROM,
2. if the setup program starts, close it,
3. click on Start, then on Run... and open the location  
`d:\java\setup.exe`  
where `d:` should be replaced by the letter assigned to your CD-ROM drive.
4. the setup program will try to detect previous versions of Java installed on your system. If you already have Java SDK (previously known as JDK) version 1.2 or higher, you can skip the installation of the Java SDK.
5. the setup program will try to detect Java documentation installed on your system. If the program cannot find any documentation installed, it is recommended to install the documentation, otherwise WinEdt will not be able to find it.
6. the setup program opens WinEdt and starts the Java-Mode installation macro. MiKTeX versions older than April 2002 will ask some questions. Just answer all questions with 'Yes'.
7. If WinEdt is not closed automatically after about 30 seconds, close WinEdt.
8. if you have Windows 2000, log off and log in again. Otherwise restart your computer.

If you want to assign keyboard shortcuts for compiling and running Java Programs (e.g. F7 and F8), read section 4.3 on key mappings.