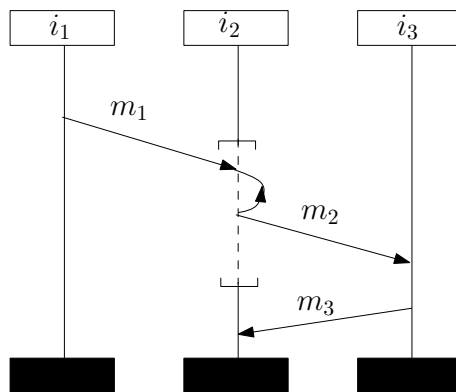
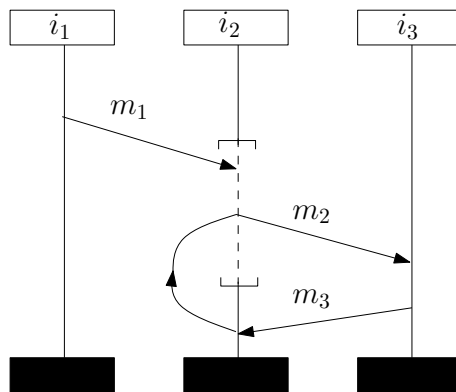


Software Specification

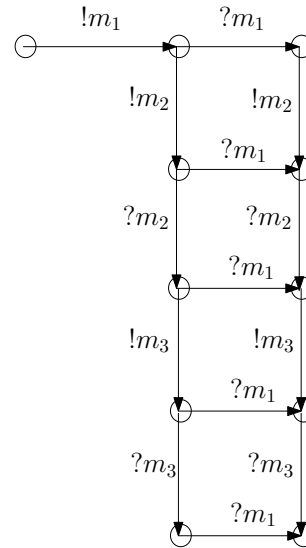
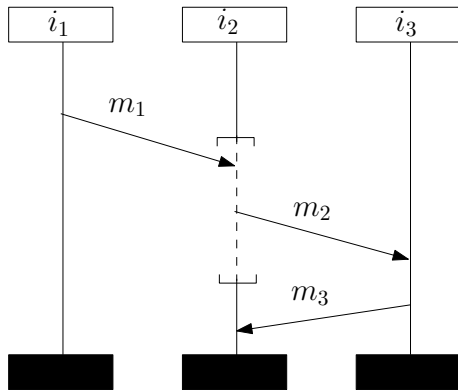
Supplementary Exercise MSCs

November 10, 2009

Exercise 1 Which of the following MSCs are consistent and which are not. Give an explanation for each case.



Exercise 2 Consider the following MSC and LTS. Is the MSC consistent with the LTS?



If so, enumerate the traces of MSC and show that they are included in the traces of the LTS. Otherwise, give a new LTS with which the MSC is consistent.