



School of  
Management and Law

oBPM

# Opportunistic business process modeling

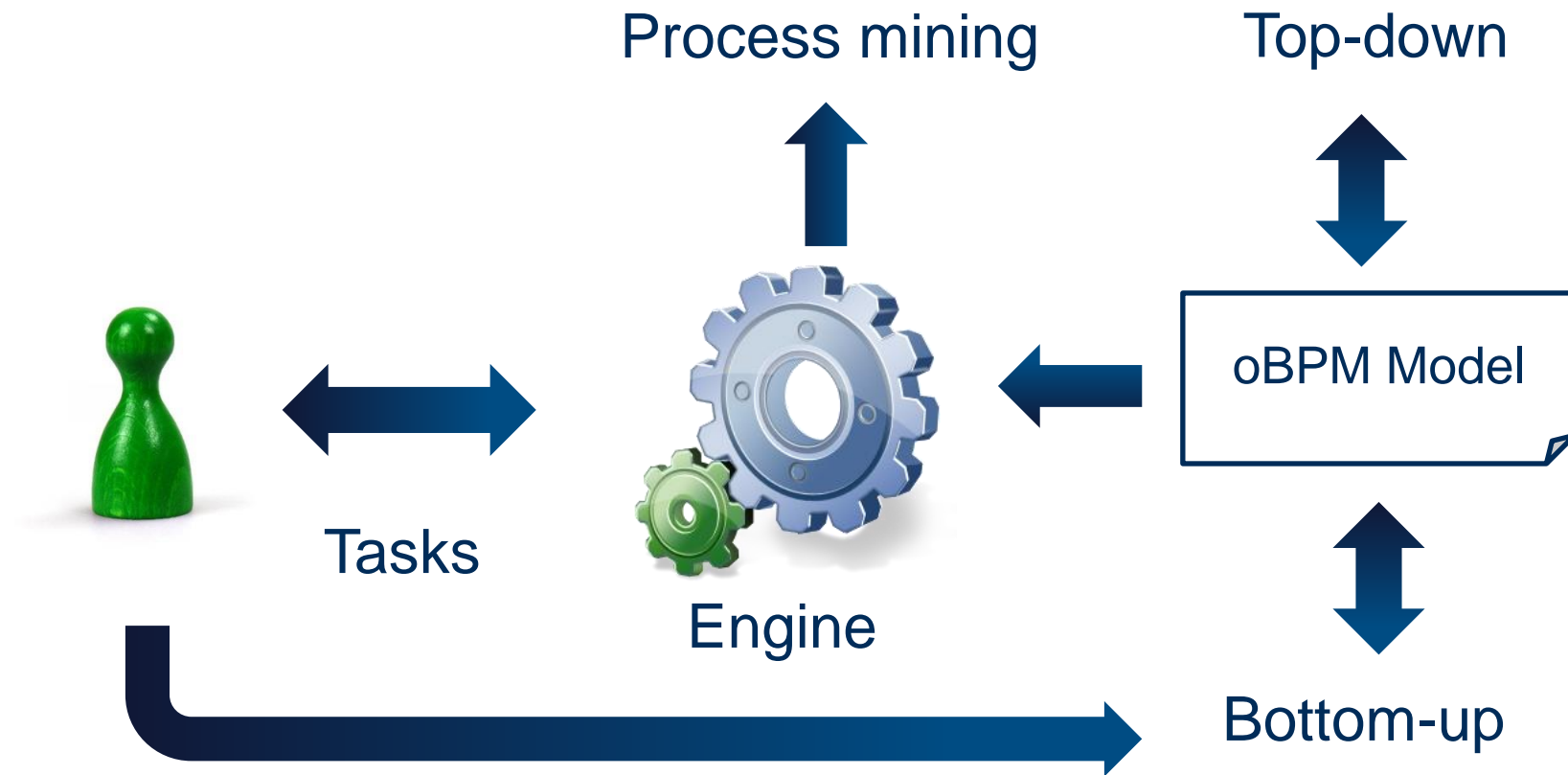


# Motivation

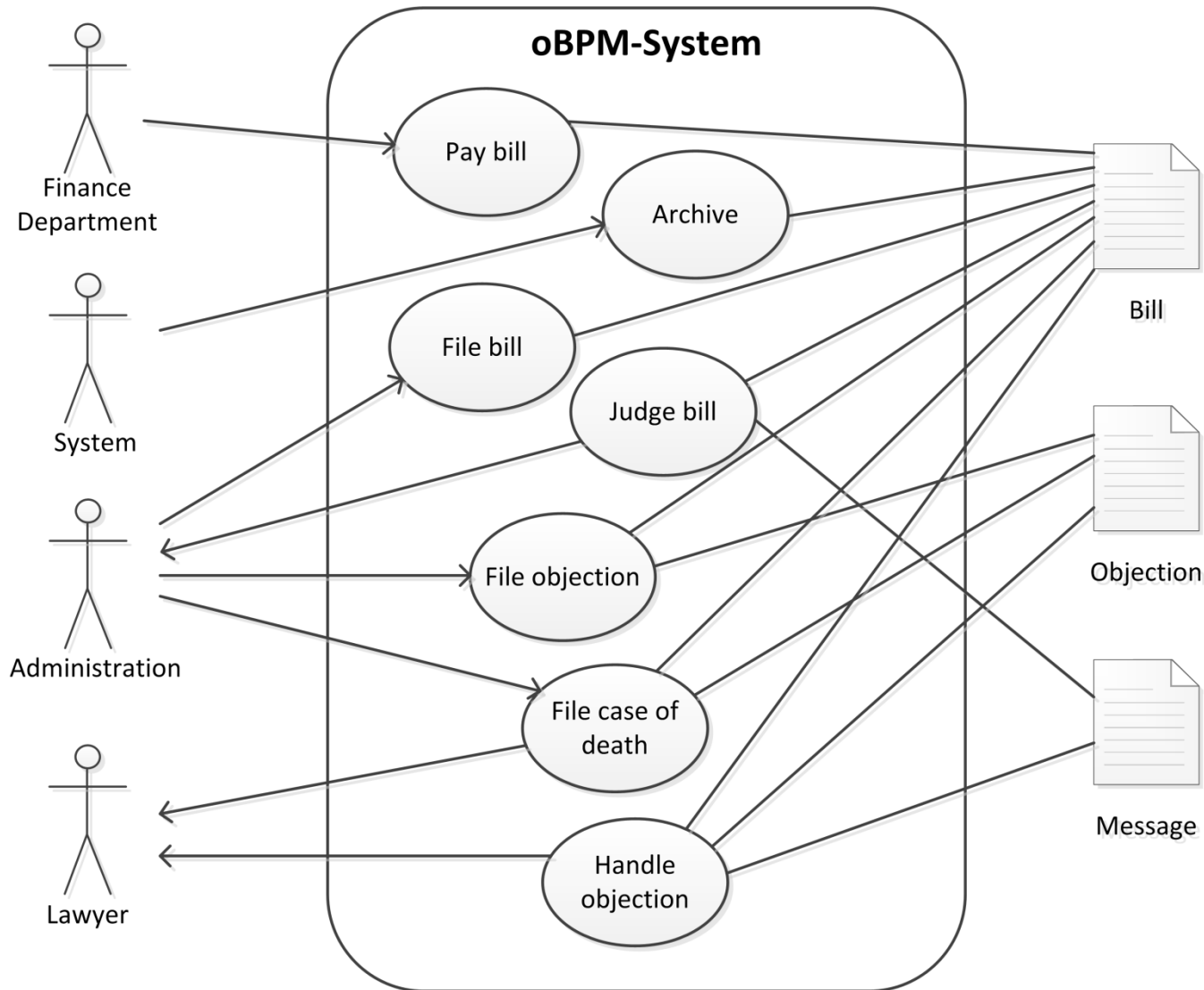
**Traditional workflow management systems are suited to automate well-structured processes based on a strict sequence of user tasks and a top-down approach to model creation. Such a conventional approach does not comply with the bottom-up philosophy of social software and therefore makes it difficult to incorporate its strengths. oBPM aims to overcome these limitations by introducing a new paradigm for modeling and executing business processes that is adequate for:**

- Opportunistic task scheduling
- Bottom-up model creation
- Agile process modification
- Process mining

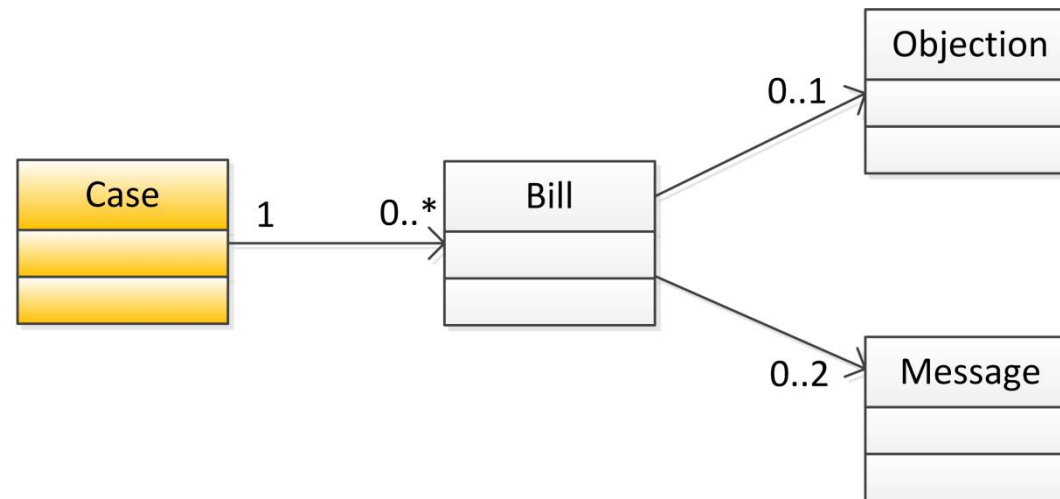
# One model – Two perspectives



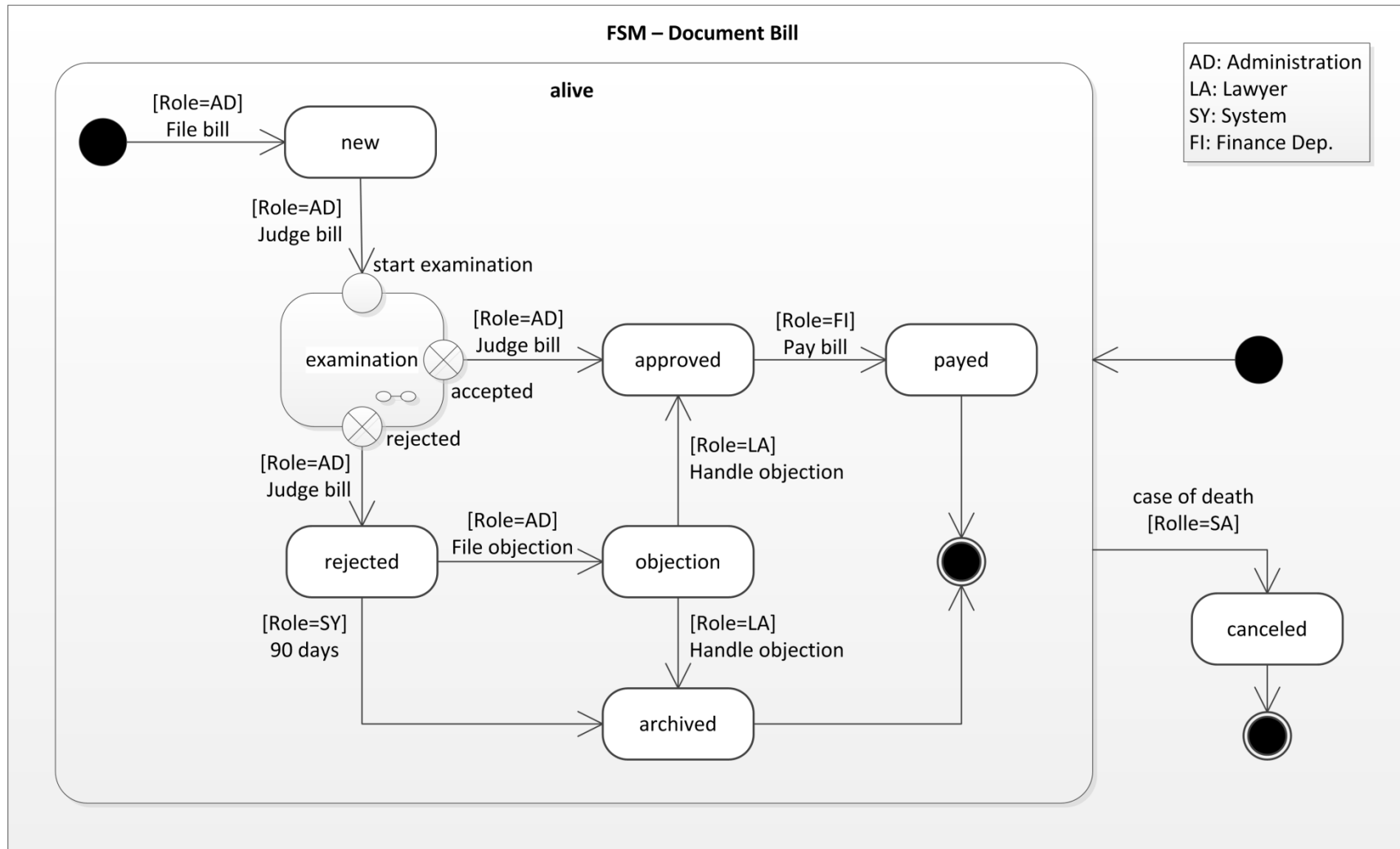
# Top-down: Use case diagram with artefacts



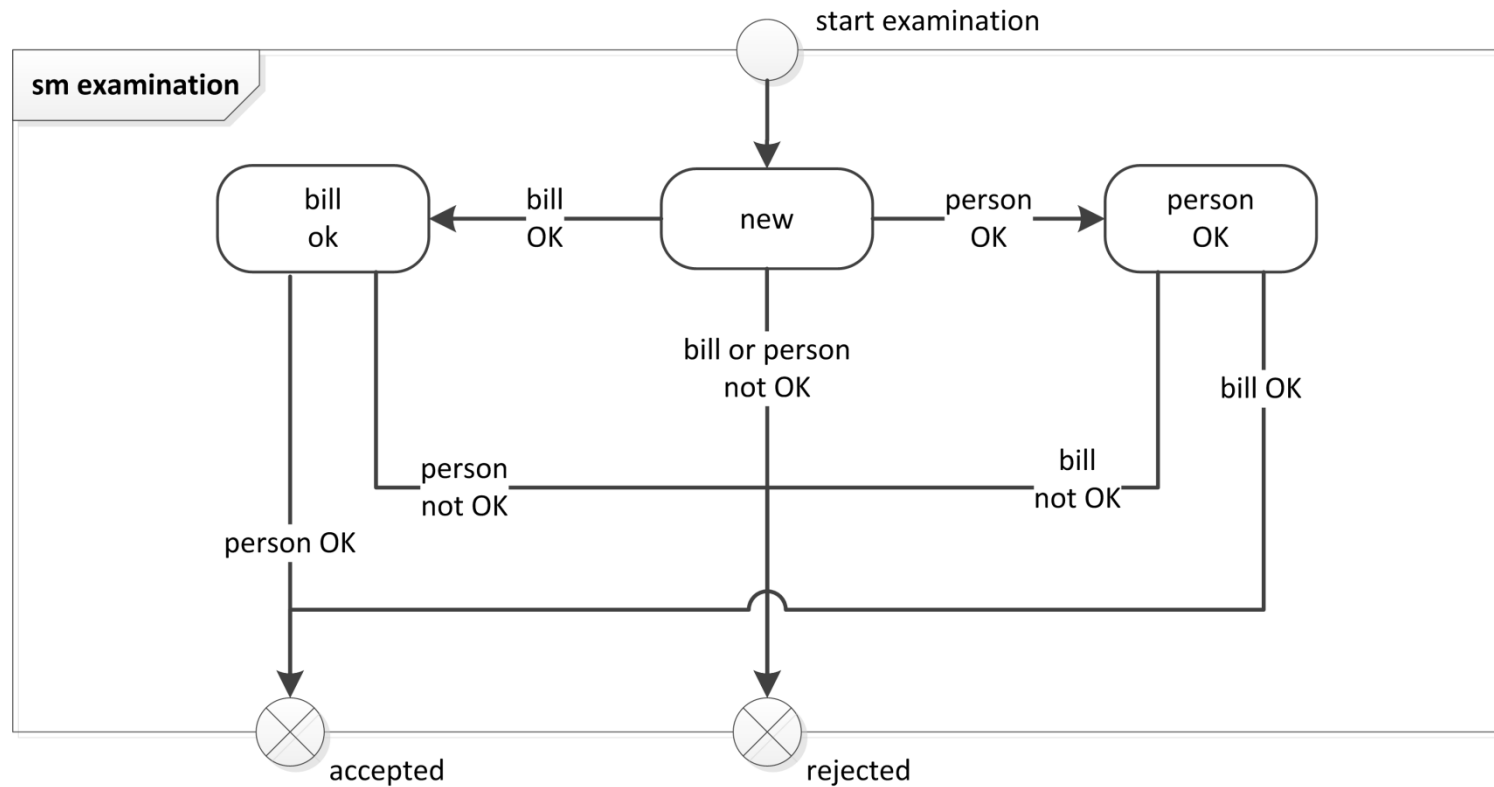
# Top-down: Dependencies between artefacts



# Top-down: State chart of an artefact



# Top-down: Sub-state of an artefact



# Bottom-up: Sub-state of an artefact

My Tasks	Trigger	Document	Start States	End States
File bill	I do	Bill	-	new
Judge bill	System	Bill	new, bill OK, person OK	bill OK, person OK
			bill OK	accepted, rejected
			person OK	accepted, rejected
		Message	-	new
File objection	I do	Bill	rejected	objection
		Message	-	new
Case of death	I do	Bill	any	canceled

Add and delete tasks

Link documents with tasks

Define state transitions



# oBPM: Model execution

