

# Social-Software-based Support for Enterprise Architecture Management Processes

**Rainer Schmidt**<sup>1</sup>, Alfred Zimmermann<sup>2</sup>, Michael Möhring<sup>3</sup>, Dierk Jugel<sup>2,4</sup>,  
Florian Bär<sup>1</sup>, Christian M. Schweda<sup>5</sup>

<sup>1</sup>Munich University of Applied Sciences, <sup>2</sup>Reutlingen University, <sup>3</sup>Aalen University, <sup>4</sup>University of Rostock



22.09.2014

# Overview

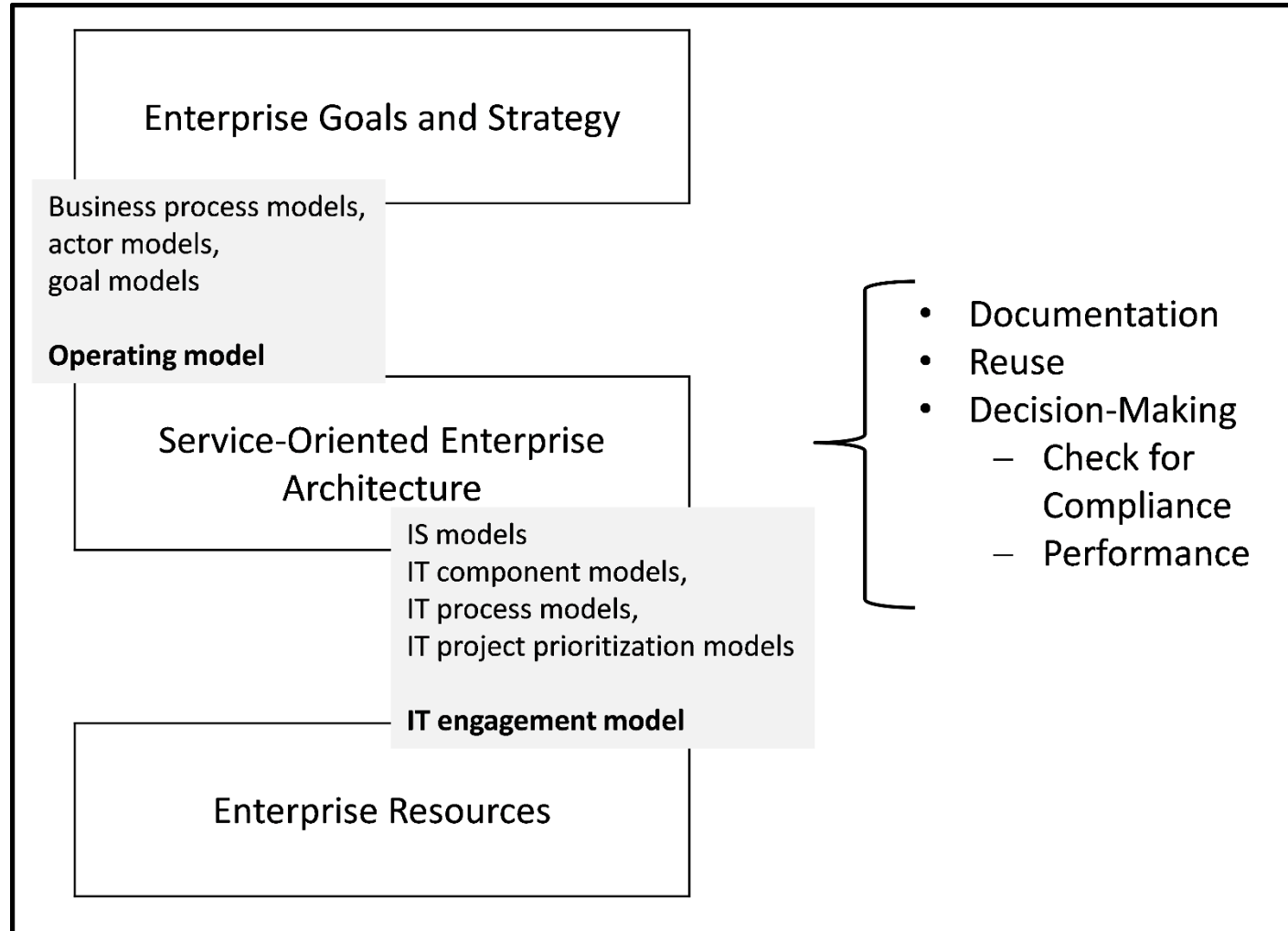
Enterprise Architecture Management (Processes)

The Tayloristic Approach to Enterprise Architecture Management Processes

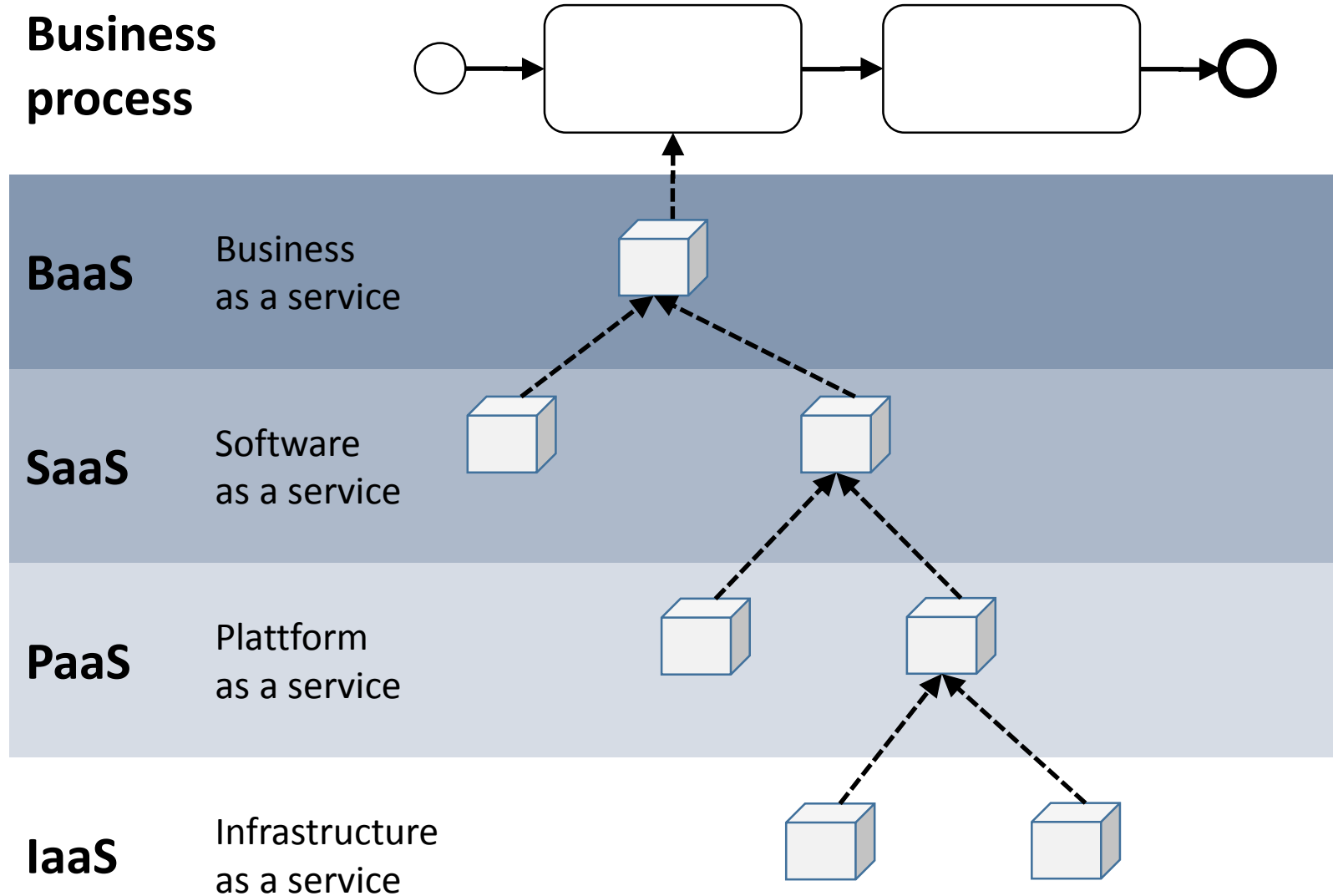
Applying Social Software to Enterprise Architecture Management Processes

Conclusion

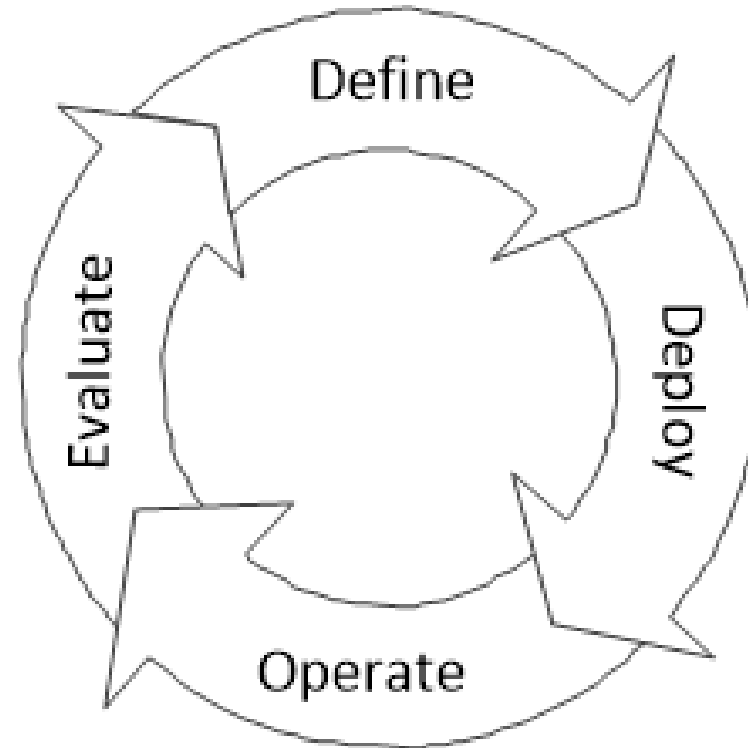
# Enterprise Architecture



# Service-Oriented Enterprise Architecture



# Enterprise Architecture Management

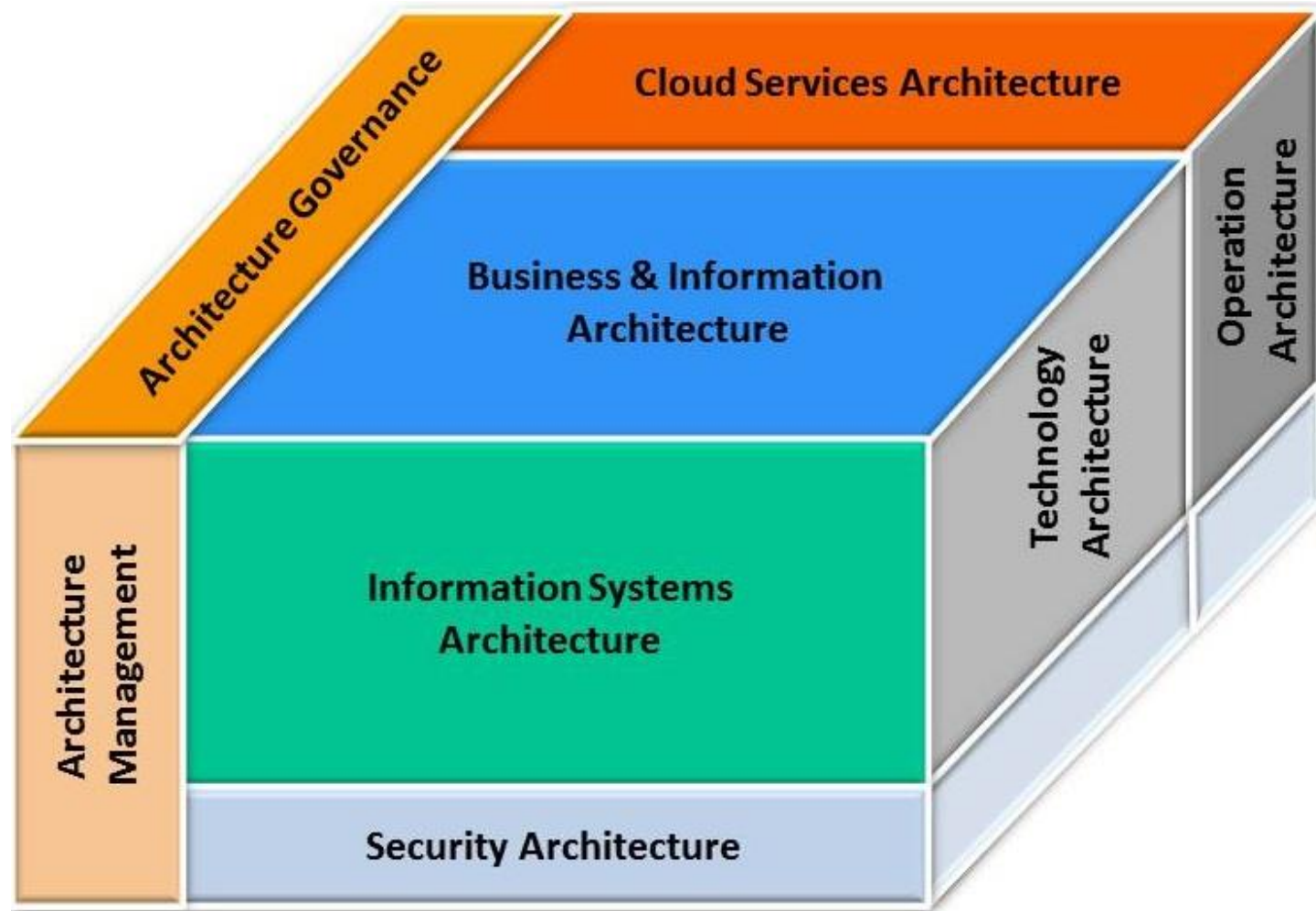


# ArchiMate Core

	Active Structure Concepts				Behavioral Concepts				Passive Structure Concepts	
Business	Business actor		Business role		Business process		Business service		Business object	Representation
	Business collaboration		Business interface		Business function		Business event		Product	Meaning
	Location				Business interaction				Contract	Value
Application	Application component		Application collaboration		Application function		Application interaction		Data object	
	Application interface				Application service					
Technology	Node		Device		Infrastructure function		Infrastructure service		Artifact	
	Network		System software							
	Communication path		Infrastructure interface							

Copyright © 2013 The Open Group. All Rights Reserved. N131 Reference Card:  
ArchiMate® 2.1 ArchiMate® is a registered trademark of The Open Group.

# ESARC



# Tayloristic Approach



**Producer**



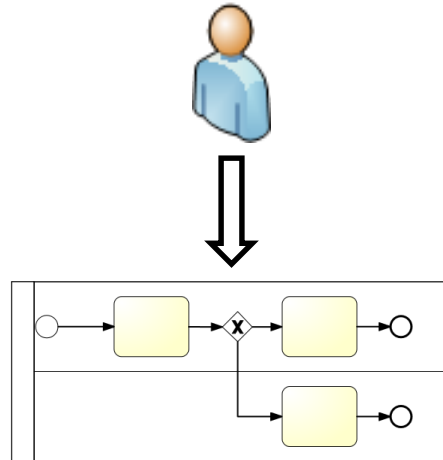
**Customer**





# Tayloristic = Expert-driven, top-down

Expert-driven



Well-defined but not used..



# Issues

Enterprise Architecture Management cross-organizational

Many stakeholders

Value of contributions not determinable in advance

# Enterprise Architecture Management Processes need Ad-Hoc Definition Workflow Definition

Knowledge Intensive Processes

Control flow too complex to be defined in advance

Real-time redefinition of workflow by multiple stakeholders

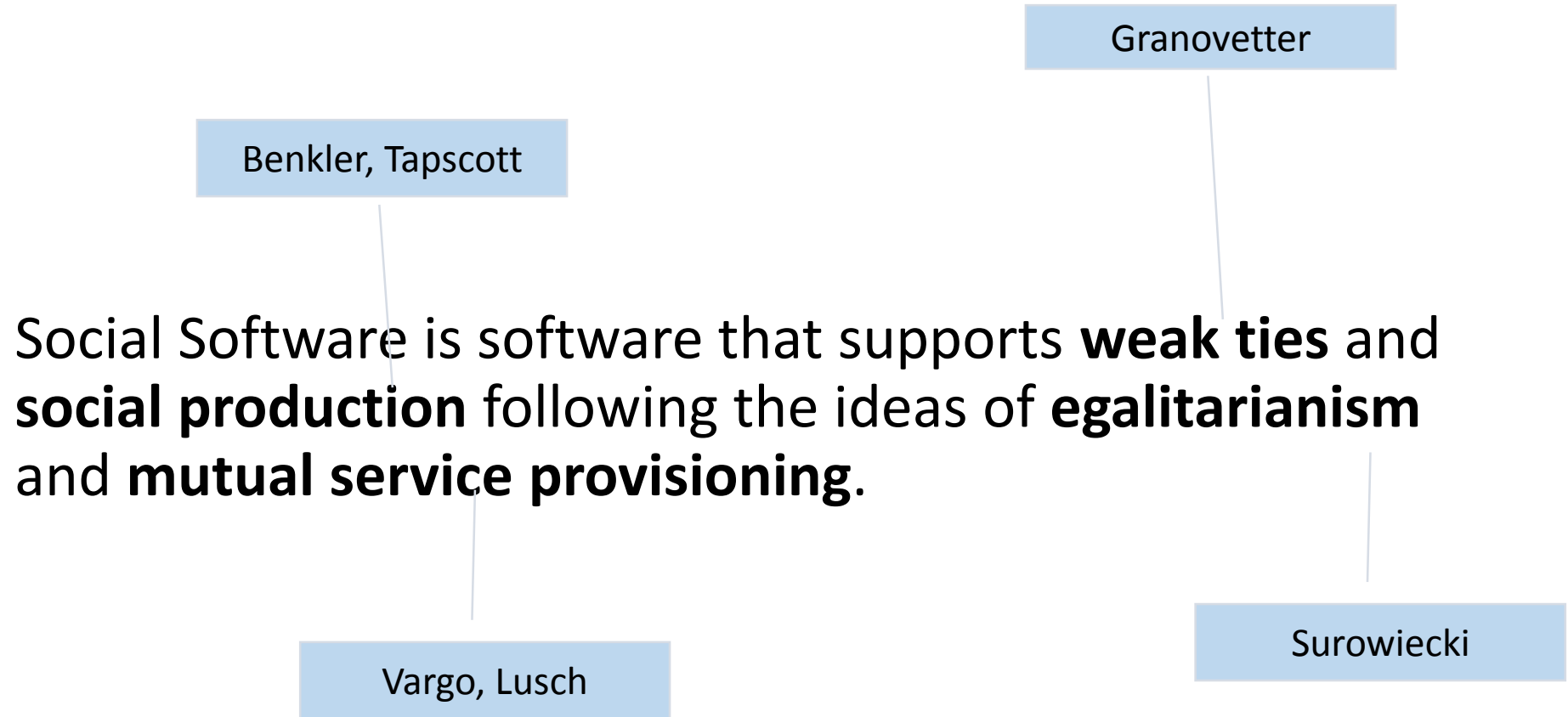
# Semantic Heterogeneity

Meaning of terms changes often on the border of organizations

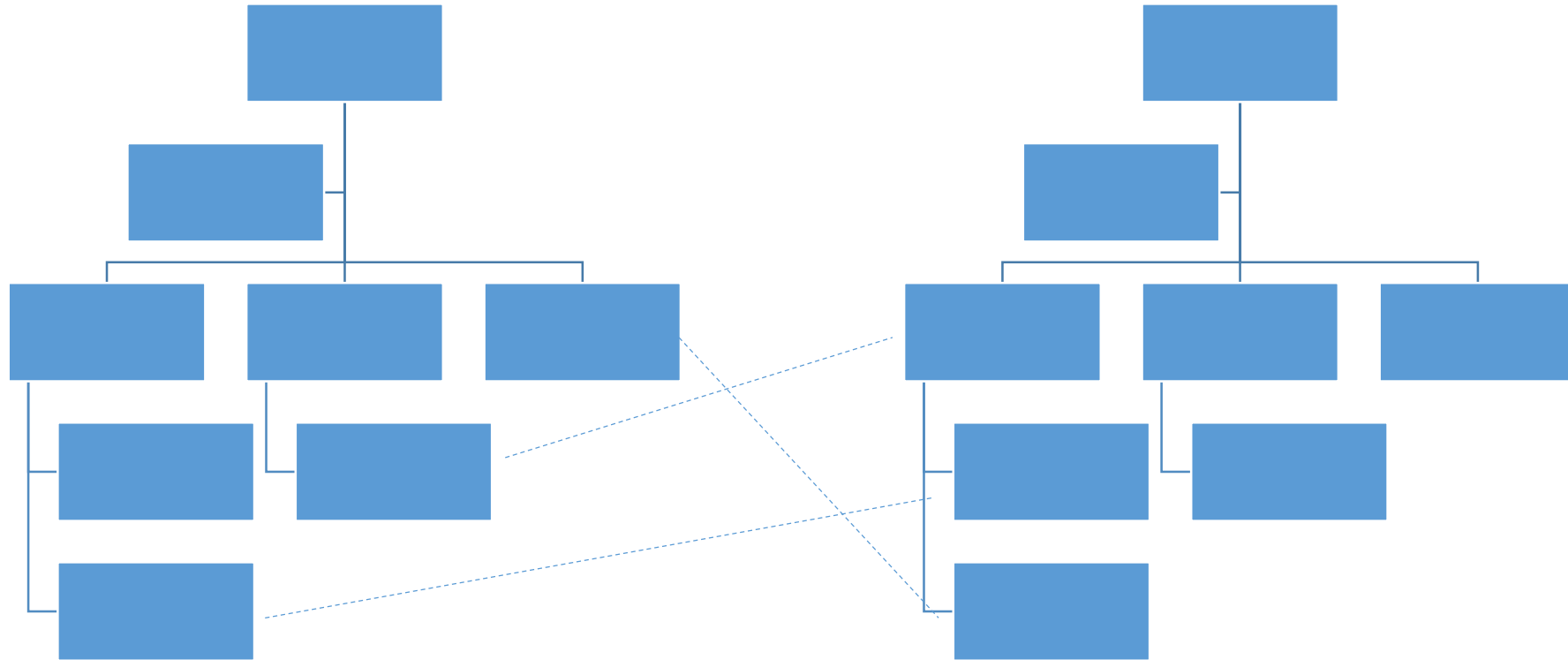
Words interpreted differently from organization to organization

Synonyms and homonyms

# Definition of Social Software

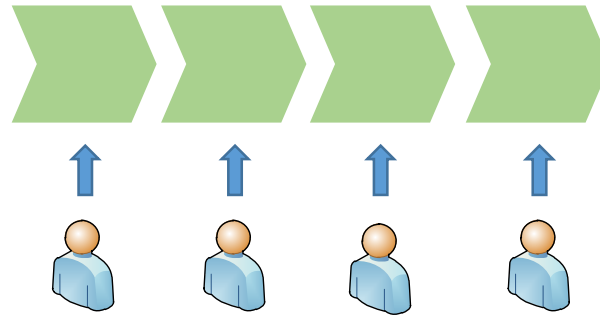


# Strong and Weak Ties



# Social Production

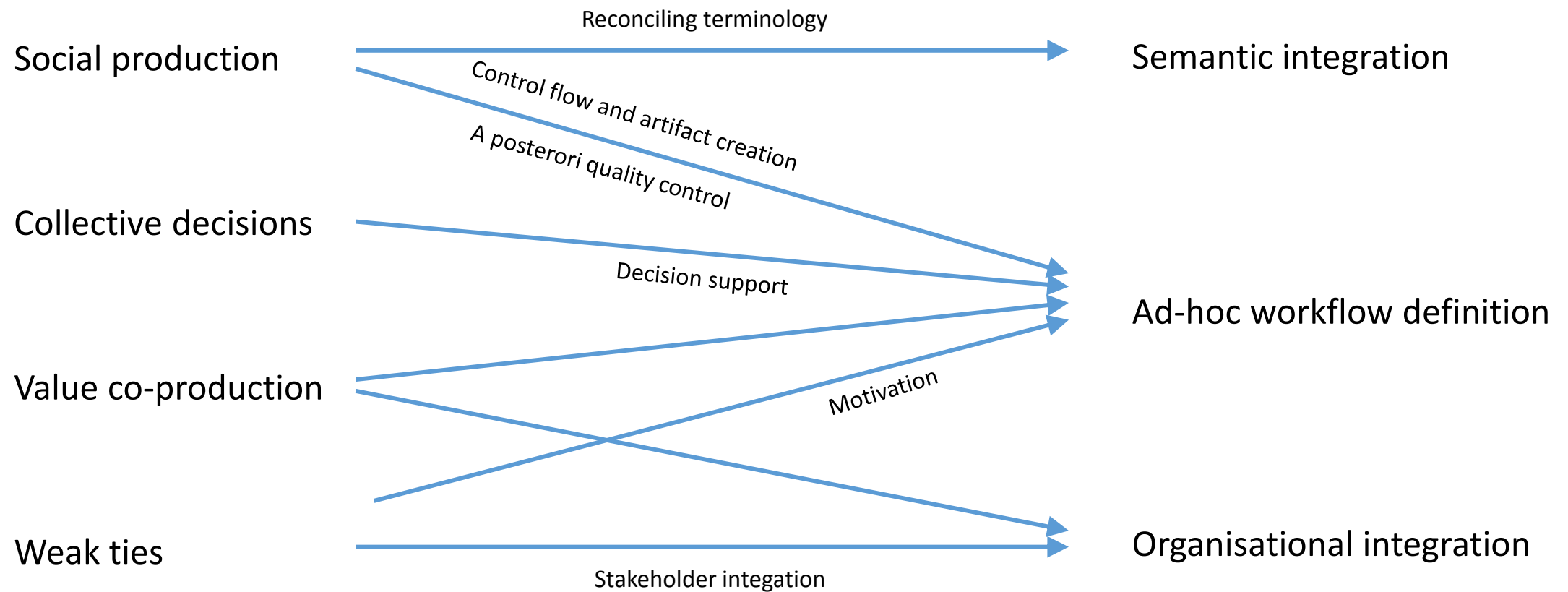
**Bottom-up and ad-hoc**



# Egalitarian Decisions







# Conclusion

## Enterprise Architecture Management Processes

Cross-Organizational  
Knowledge Intensive

## Social Software Provides

Integration of stakeholders across organizations  
Value-Co-Creation

## Outlook

