

# PROCESS MODEL COLLECTIONS: WHAT'S IN IT?

Prof.dr.ir. Hajo Reijers  
e: [h.a.reijers@vu.nl](mailto:h.a.reijers@vu.nl)  
w: [www.reijers.com](http://www.reijers.com)  
t: @profbpm

$$A = \{1, 3, 5, 7, 18\}$$

$$B = \{1, 7, 18\}$$

$$C = \{18, 7, 1, 19\}$$

$$B \subseteq A$$

B is subset A

$$B \subsetneq A$$

B is "strict" subset

$$A \subseteq A$$



The Borghese Vase  
second half 1st century BC  
sculpted in Athens



Apollo and Daphne  
1622-1625  
Gian Lorenzo Bernini



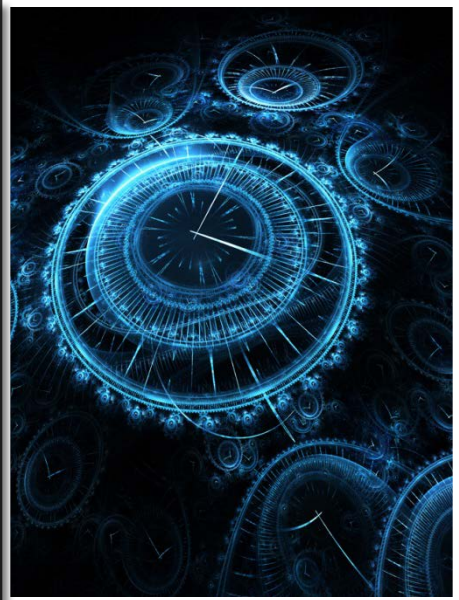
Scipione Borghese  
1 September 1577 – 2 October 1633



The Villa Borghese Pinciana

1609 – 1613

Flaminio Ponzio







“A process model collection, if well maintained, represents the DNA of an organization. It describes, even to an intimate level, each and all organization's business operations, and more importantly, how these are interrelated. This can serve for different purposes: from auditing and compliance checking through to communication, requirements analysis and software implementation.”

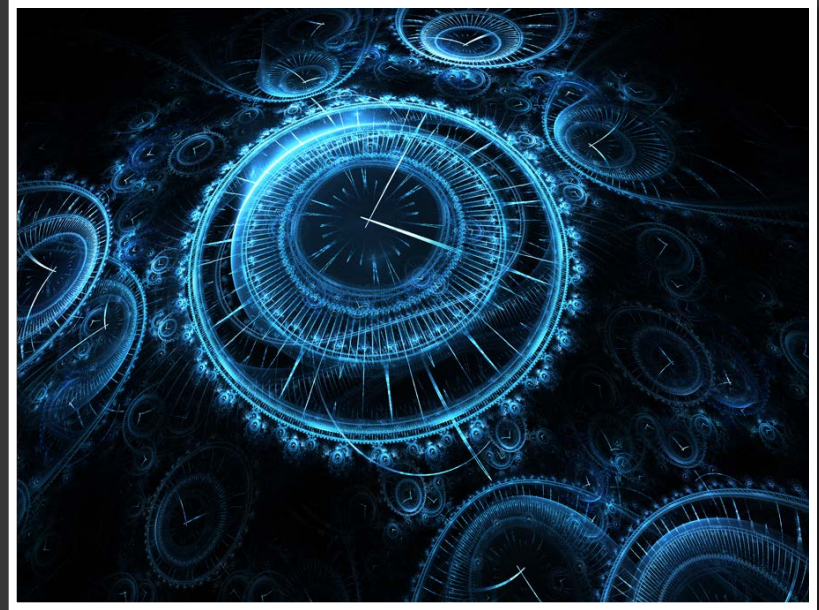




“Tooling is often focused on one off process design, not on easily maintaining consistency and correctness of large volumes of processes ( I give you Aris as an example).”



“What my organization would like to see is the total value-streams, which requires that not just the models are provided but their dynamic relations are understood as well. That would really help us to gain value from our process model collections.”



“I personally think a major step forward in the uptake of process model collections could be provided by their ability to ‘self-adapt’ to changing business operations. In other words, the collections should have the capability of (semi-automatically) identifying sensible changes in the business operations they refer to, and update the models accordingly. This way, models and business operations are kept in synch at a minimum cost.”

“People intrinsically don't like to maintain process models (boring).”

A close-up photograph of a computer keyboard key. The key is light-colored and has the word "ACTION" printed on it in a bold, dark, sans-serif font. The key is slightly raised and has rounded edges. To the left of the "ACTION" key, there is a key with a dark triangle symbol. The background is a dark, solid color, possibly a desk or the keyboard's base. The lighting is soft, highlighting the texture of the key and the sharpness of the text.

**ACTION**