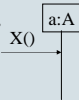




General comments - models

- Logical model should not contain implementation details (GUI, Window, Screen) – examples in SRDs
- Use of aggregations can simplify matters (e.g. a collection of all activities: no need to iterate over Projects, Activities, Contributions)
- In SD on the right, class A must define a method X()!
- Nothing happens when no actions are taken: if, e.g., a list of projects needs to be shown, this list must be constructed!
- Setters and getters may be left out of the logical model: for each attribute X of type Y, by default methods setX(y:Y) and getX():Y may be assumed to be present



Part-of relations

Black diamond: whole and part have equal Life-times; whole creates and destroys part. Whole owns part

Open diamond: Whole has a dynamically changing collection of parts. Usually it owns the collection but it can also be, e.g., a collection of references

- Associations: other relations between classes: attributes, parameters

